

# ARJOHUNTLEIGH

GETINGE GROUP

## MAXI SKY 600

A COMPLETE, CUSTOMIZED  
CEILING LIFT SYSTEM



...with people in mind

## A TOTAL CEILING LIFT CONCEPT

*Maxi Sky<sup>600</sup>*™ is a ceiling lift system that enables patients and residents to be transferred in a comfortable and dignified way. For the caregiver, it offers an easy-to-operate system that eliminates manual lifting.

A single caregiver can perform transfers quickly and efficiently, controlling all procedures with the handset. *Maxi Sky<sup>600</sup>* saves time, because it is always available for use and is within easy reach for the caregiver. When it's not in use, the unit takes up no precious floor space as it is discreetly out of sight at the recharging station on the overhead track.

What makes *Maxi Sky<sup>600</sup>* unique? It is a total concept. ArjoHuntleigh does much more than deliver an advanced ceiling lift; we offer complete support every step of the way from track design to long-term system servicing.



- **Enhanced Charging System (ECS)**

Automatically and continuously charges the *Maxi Sky*<sup>600</sup> batteries, allowing the caregiver more quality time with the patient, while ensuring a safe and comfortable transfer.

- **Designing the best system for your facility**

We will help you create a layout that provides ideal coverage using our revolutionary modular track.

- **Faster installation**

Track installation is a quicker and easier process due to a new patented bracket design.

- **On track**

The tight radius of the curved track sections enables layouts with superior space utilization. Track sections fit together using a unique pin-locking system, and once in place, the seamless joints provide a smooth ride for the client during lateral movement.

- **Instant availability**

The lift is always ready for use. After transfers, the lift can be programmed to return to the clip-on charging station, which can be positioned anywhere on the track.

- **Smooth operation and control**

Regulation of lateral speed and spreader bar height is programmable from the handset. Electronic soft-start/soft-stop enables the lift to be stopped smoothly and safely in the required position.

- **Simple maintenance**

Battery changing is easy and requires only a screwdriver. A red light on the lift alerts the caregiver when servicing is required.

- **The widest range of accessories**

Access to our patient interface solutions – clip slings, loop slings, spreader bars and stretcher frames – gives you unrivalled flexibility to adapt to different needs.

- **Provision of staff training**

We not only provide thorough guidance on how to use the system correctly, but also offer training on ergonomic working techniques.

- **Long-term system support**

ArjoHuntleigh's technical support staff ensure that regular servicing and any unforeseen problems are dealt with quickly and efficiently.

*Maxi Sky*<sup>600</sup> has a discreet, aesthetic design that blends in well with any healthcare environment.



# ACCESSORIES FOR OPTIMIZED CARE



ArjoHuntleigh slings are color-coded to clearly indicate sizes.

Patient interface solutions are the key to optimizing care for individuals. The comprehensive range of *Maxi Sky<sup>600</sup>* accessories gives facilities flexibility to provide ideal solutions for different client requirements and to respond to their changing needs.

## Sling solutions

A complete range of ArjoHuntleigh loop and clip slings covers the needs of all healthcare facilities. Clip slings include standard padded and unpadded slings, special purpose slings for toileting, mesh slings for bathing and showering, and solutions for single and double amputees. The broad spectrum of sizes and sling types means that the ceiling lift can always be used with a sling that is optimized for the client's comfort and safety.



A 4-point Powered DPS spreader bar is available.

## Spreader bars

ArjoHuntleigh loop and clip slings fit applicable 2-point spreader bars or 4-point DPS (Dynamic Positioning System) spreader bars. The DPS provides a safe and comfortable sling position for the client during transfers and makes repositioning tasks easier for the caregiver. Powered DPS enhances DPS benefits by providing powered assistance to improve the precision and ease of client repositioning. Using Powered DPS enables effortless, exact positioning of the client at the press of a button.

## Enhanced Charging System (ECS)

ArjoHuntleigh's Enhanced Charging System ensures that the batteries of the *Maxi Sky<sup>600</sup>* are continuously being charged, via a copper strip, everywhere along the track. This unique concept eliminates all risks of drained batteries, as the ECS shuts off when it is fully charged.



**Walking Jacket**

Compatibility with the ArjoHuntleigh Walking Jacket means *Maxi Sky<sup>600</sup>* can also be used as an aid in rehabilitation. The *Walking Jacket™*, which is applied to a 2-point loop spreader bar, provides safe and stable support during walking and stepping exercises.

**Stretcher frame**

*Maxi Sky<sup>600</sup>* is compatible with different stretcher solutions such as the scoop stretcher.

**Quick Connect**

At facilities where there is a regular need to switch between various spreader bars or to a stretcher, the Quick Connect accessory can provide a smooth, fast solution for changeovers.

**Electronic scale**

The optional Class 3-approved electronic scale allows clients to be weighed easily and efficiently during transfers.



The 4-point flat DPS spreader bar is recommended for low ceiling clearance.



Class 3-approved scale, used here on a 2-point spreader bar.

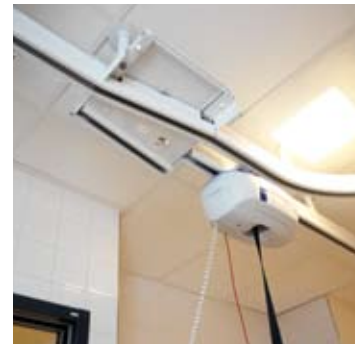


## A FLEXIBLE MODULAR TRACK SYSTEM



The exchanger and turntable enable a variety of different track solutions.

The exchanger is powered by the lift cassette of *Maxi Sky<sup>600</sup>* to facilitate track switching. This solution means no extra power supply needs to be installed.



*Maxi Sky<sup>600</sup>* can continue on a different track after passing the exchanger.



A turntable provides a choice of direction outside the client's room.

Two, three or four tracks can be connected at various angles to the turntable, which is also powered by *Maxi Sky<sup>600</sup>*.



The gate, powered by *Maxi Sky<sup>600</sup>*, is a smooth way to combine a fixed track and an X-Y (traverse) system.



## MAXI SKY IN CARE SITUATIONS



If a client has fallen, the long lifting strap (7 1/2 feet) makes it easy and safe to perform a lift from the floor.



When full-room coverage is required, the X-Y (traverse) system is an ideal choice. With the unique traverse action, the track moves easily, with no risk of jamming.



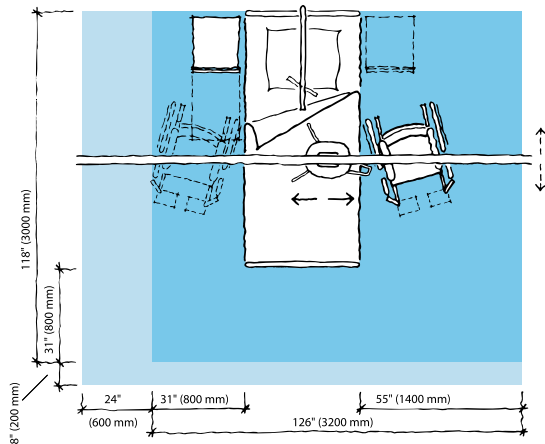
The track can be partially concealed in a suspended ceiling to provide a discreet solution.



There is a full range of *Maxi Sky* ceiling lifts which include a portable lift, *Maxi Sky*<sup>440</sup>, with a safe working load of 440 lbs (200 kg) and, pictured here, *Maxi Sky*<sup>1000</sup>, which is designed to handle bariatric clients, and has a safe working load of 1000 lbs (455 kg).

# PRODUCT SPECIFICATIONS

## Space requirement



- Blue area shows the minimum working area required for the staff to be able to use the mechanical aids in an ergonomic way from one side.
- Light blue area shows required extension of working area to facilitate activities from either side to provide adequate access for the resident, mechanical aid and assisting caregiver.

The *Maxi Sky<sup>600</sup>* is part of the complete ArjoHuntleigh *Maxi Sky* ceiling lift range that includes the *1000* model, a bariatric ceiling lift, and the *440* model, a portable ceiling lift.

## Mobility Gallery™

Suitable for Doris and Emma



- D Doris**, who has no capacity to support herself
  - E Emma**, who is almost completely bedridden and totally dependant
- Please contact ArjoHuntleigh for further information on the Mobility Gallery™.

## ArjoHuntleigh

2349 West Lake Street  
Addison, Illinois 60101  
Phone: 800-323-1245  
Fax: 630-925-7969

# ARJOHUNTLEIGH

GETINGE GROUP

[www.ArjoHuntleigh.com](http://www.ArjoHuntleigh.com)

## Product information

Safe working load	600 lbs (272 kg)
Unit weight (batteries included)	28 lbs (11.5 kg)
Length	15 ¾" (400 mm)
Width	10 ⅛" (256 mm)
Height	7 ⅜" (188 mm)

LED indicator when maintenance is required

Electronic microprocessor soft-start and soft-stop motor control

Double centrifugal emergency brake system

Manual emergency lowering device (located on the motor cab)

Electrical up and down emergency buttons

Emergency stopping device (pull cord) accessible from the ground

Strap length up to 7 1/2 feet (2.3 meters)

Lifting speed: 1.2 in/sec (2.7 cm/sec) at 600 lbs (272 kg)  
1.6 in/sec (3.5 cm/sec) at 440 lbs (200 kg)  
2.3 in/sec (6 cm/sec) at 0 lbs (0 kg)

Batteries: 2x5 Ah will average 150 cycles (loaded at 165 lbs / 75 kg)

Adjustable horizontal displacement speeds: 4, 6, 8, 10 in/sec  
Preset at 8 in/sec

User initiated return to charge station function with weight sensor cut-out of 20 lbs (9 kg) on/off programmable

ABS FR casing (fire retardant)

Charger unit 100-240 Vac / 50-60 Hz / 27 Va

Clip-on charger anywhere on the track

Class 2 insulated

Hand control Santopren tactile buttons / IP44

Infrared remote control (optional)

## Approvals

CSA No 601.1, UL No 2601-1 certifications  
CE marked / ISO 10535

Use only ArjoHuntleigh designed parts, i.e. parts specifically designed for the purpose, on equipment and products supplied by ArjoHuntleigh. As our policy is one of continuous development, we reserve the right to modify designs and specifications without prior notice.

© and ™ are trademarks belonging to the ArjoHuntleigh group of companies. © ArjoHuntleigh, 2009

**GETINGE GROUP** is a leading global provider of equipment and systems that contribute to quality enhancement and cost efficiency within healthcare and life sciences. We operate under the three brands of ArjoHuntleigh, GETINGE and MAQUET. **ArjoHuntleigh** focuses on patient handling and hygiene, disinfection, DVT prevention, medical beds, therapeutic surfaces and diagnostics. **GETINGE** provides solutions for infection control and prevention within healthcare and life sciences. **MAQUET** specializes in therapeutic applications, products, solutions and services for OR and ICU.